



TES3000-60 Rev I June2009

BENEFITS

60dB Isolation @1GHz

USB interface

50MHz to 3GHz



FEATURES

Low Insertion Loss

PC Software supported

Non reflective

Max input +20dBm



DESCRIPTION



The TES3000-60 is a Laboratory-quality, RF SPDT Switch with 60dB isolation and only 1dB insertion loss. The switch is full terminated at all ports

The TES3000-60 is the smallest USB microwave switch available and is also priced significantly below the current market offerings.

Applications include switching between two RF sources or loads. The optional HUB allows the switch to remain in a given state even after the host PC is removed from the system.

The switch also contains 0.5GB of flash memory used for installation files, test data and other supporting documentation. Drivers, utilities and documentation are available on the switch itself.

CALIBRATION



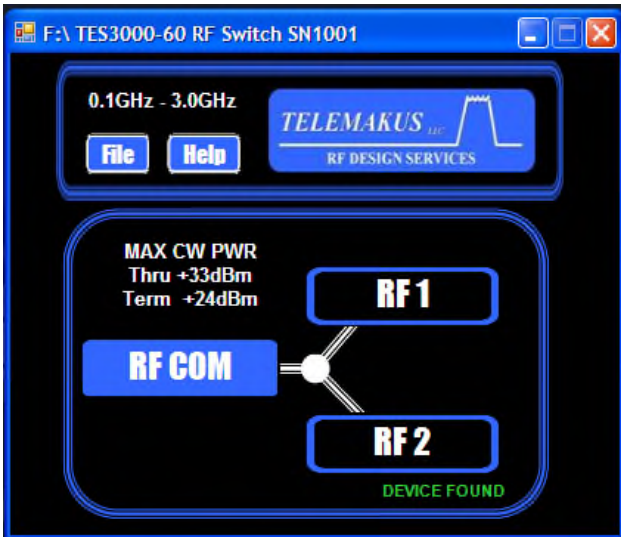
Full test data performed at the factory results are stored on the each unit in .s2p format in Flash.



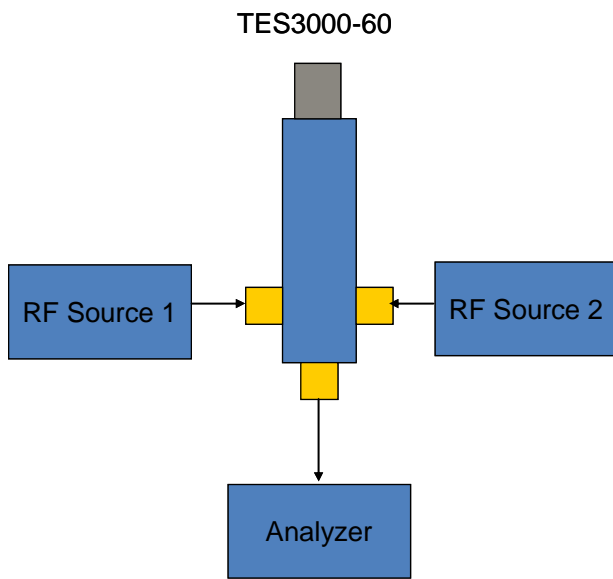
RF DESIGN SERVICES

Phone: 916 458 6346
Fax: 916 983 8713
Email: mail@telemakus.com
www.telemakus.com

Primary Business Address
13405 Folsom Blvd #502
F O L S O M
C A , 9 5 6 3 0



Easy to use graphic interface with push button controls



Typical Configuration



TES3000-60 Rev I JUN

Ordering information

Model	Frequency	Max Input
TES3000-60	50MHz to 3GHz	+23dBm

Specifications

Parameter	Specification
Freq Range	50MHz to 3GHz
Isolation	60dB
Interface	USB 2.0
Current	150mA @5V Vbus(USB)
High IP3	=55dBm
Insertion Loss	<1dB
PI dB	50dBm
Switching Time	2uS
RF Common Connector	SMA Male
RF1 and RF2 Connector	SMA Female
USB Connector	Mini A

Environmental

Temperature Range	-40 to +55 degC
Not Environmentally sealed	

Phone: 916 458 6346
 Fax: 916 983 8713
 Email: mail@telemakus.com
 www.telemakus.com

Primary Business Address
 13405 Folsom Blvd #502
 Folsom
 CA, 95630